

etnaviv status  
update

whoami

Christian Gmeiner

Long term etnaviv developer

# agenda

History

State

CI

Future

# History

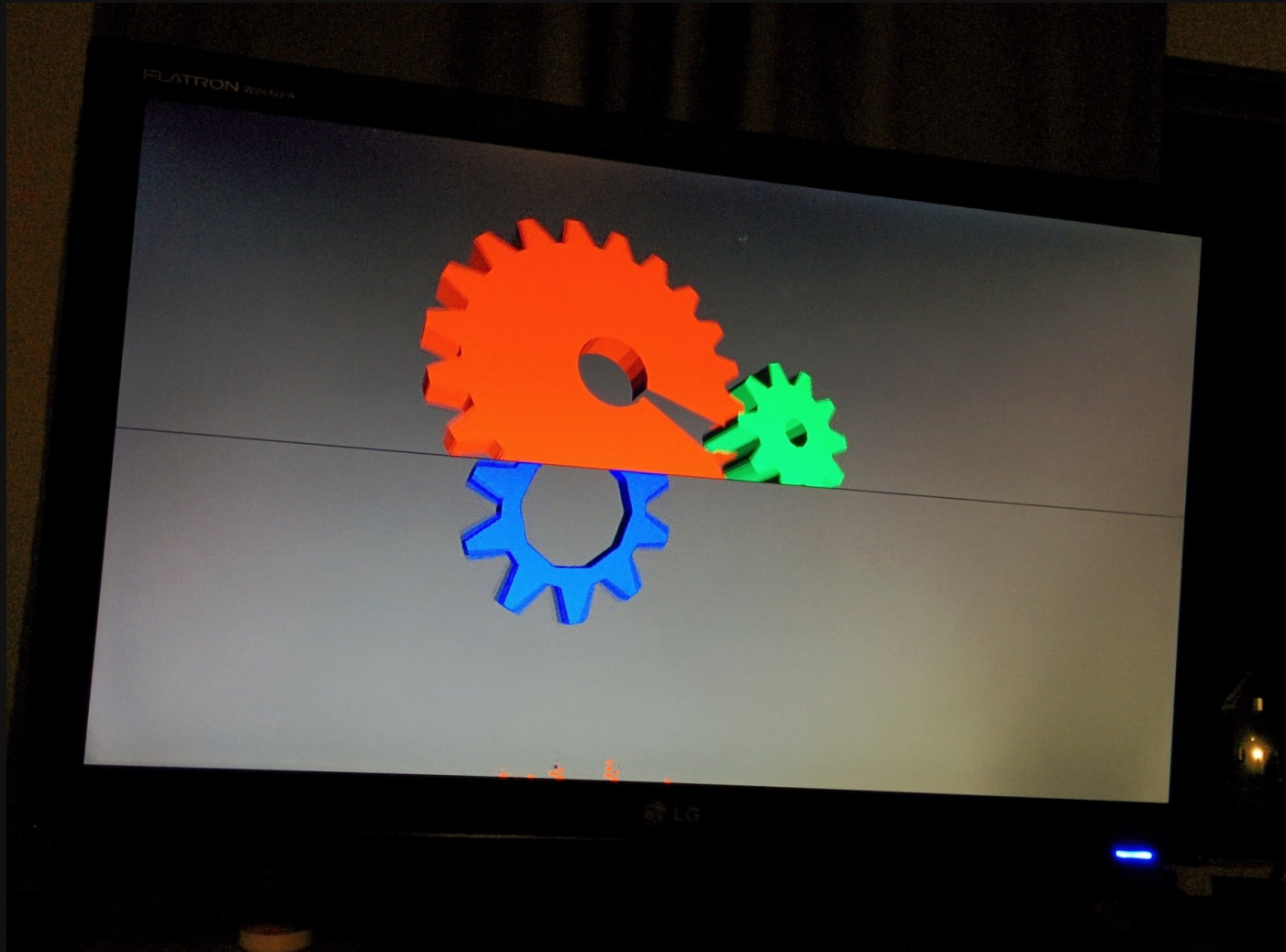
# History

2012: Wladimir J. van der Laan started

2013 Okt: I contributed the first patch

2014 Feb: got basic stuff working on GC2000

# History



# History



# History

2012: Wladimir J. van der Laan started

2013 Okt: I contributed the first patch

2014 Feb: I got basic stuff working on GC2000

2014: devs started to look into own kernel driver

2015 Dez: etnaviv driver landed in the kernel (4.4)

2017 Feb: etnaviv driver landed in mesa 17.0



# State

# State

## Supported GPUs

- GC600 (STMicroelectronics STM32MP157C)
- GC860 (Ingenic JZ4770 MIPS: GCW Zero)
- GC880 (Freescale i.MX 6 DualLite)
- GC2000 (Freescale i.MX 6 Quad)
- GC3000 (Freescale i.MX 6 Quad Plus)
- GC7000L (Freescale i.MX 8 M)

and many more...

# State

GL ES 2 driver

Desktop GL 1.3 or 2.0 with NIR

TGSI preferred over NIR

Shipped with distros

not that many developers - sadly

it works mostly

# State

## glmark2 results

imx6q:

binary: 239.1    etnaviv: 226.5    95%

imx6qp:

binary: 373.8    etnaviv: 384.8    103%

imx8m:

binary: 570.0    etnaviv: 625.6    110%

CI

more testing for patches is needed

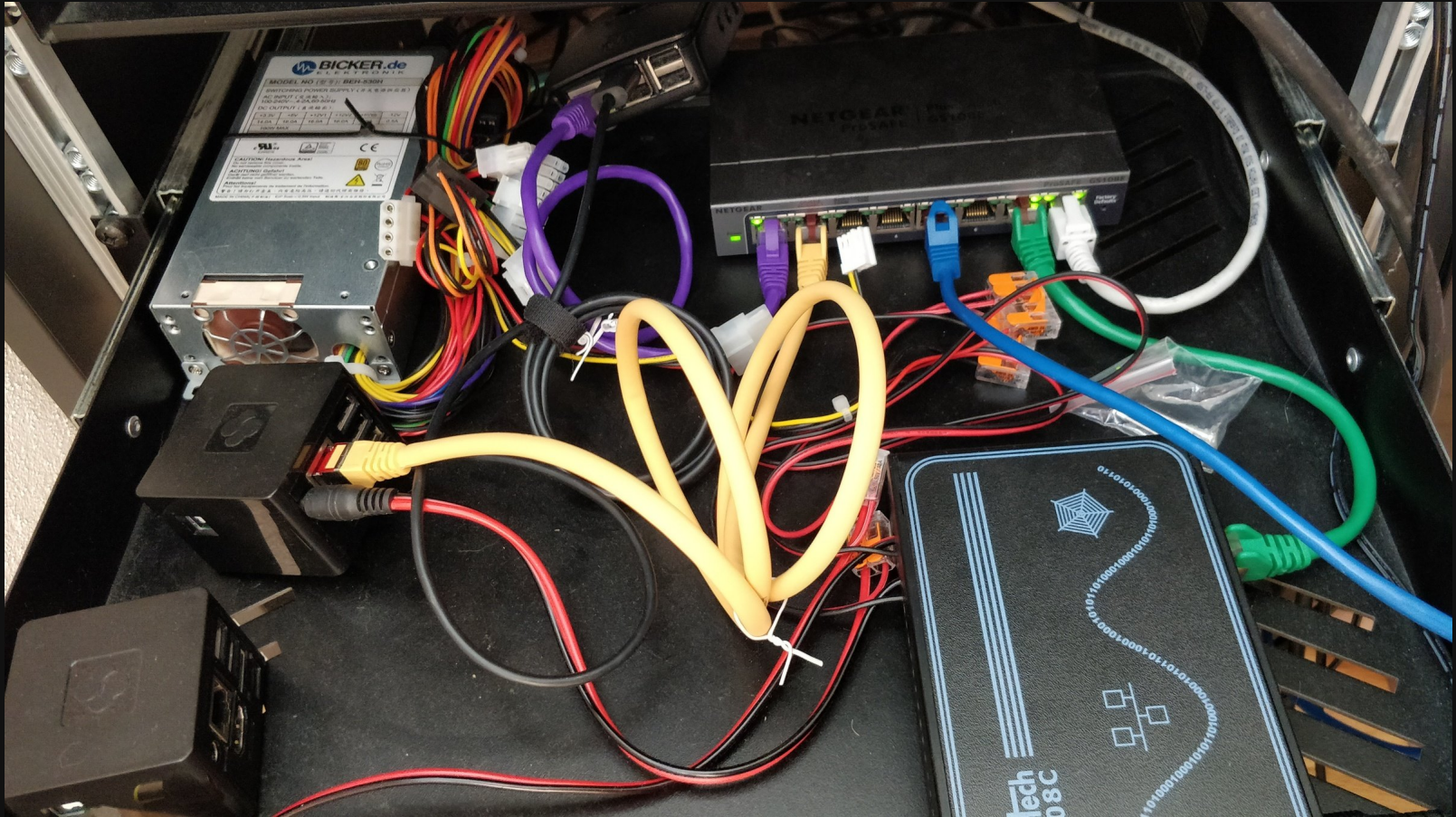
baremetal based

unraid based NAS for gitlab-runner

ser2net for console logging (rpi)

eth based power control

CI



CI

what is missing to go live?

disk shader cache

vlan setup

getting it a little bit more stable

hook up some more devices

Future



# Future

NIR

GLES3 support

fixing broken stuff on different GPUs

and much more

**Thank you!**